



# Personal Laminators

Cosmic (125)



Cosmic (95)

Please read these instructions before use.

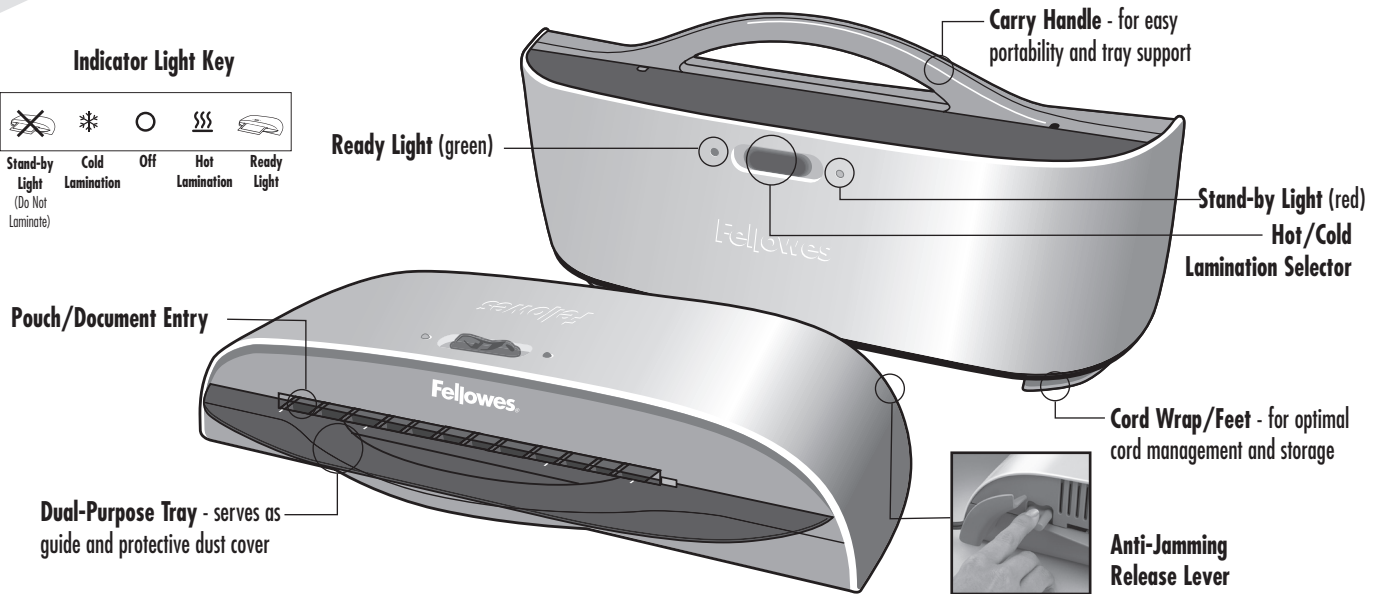
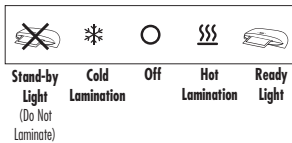
Veuillez lire ces instructions avant utilisation.

Lea estas instrucciones antes del uso.

[fellowes.com](http://fellowes.com)

# ENGLISH

## Indicator Light Key



## CAPABILITIES

	CL 95	CL 125
Pouch Thickness	3 mil	3 mil
Estimated Heat-Up Time	6 Minutes	6 Minutes
Approximate Cool-Down Time	90 Minutes	90 Minutes
Lamination Speed	12" (30 cm)/Minute	12" (30 cm)/Minute

	CL 95	CL 125
Maximum Width	9" (220 mm)	12.5" (330 mm)
Voltage	120V~	120V~
Frequency	60 Hz	60 Hz

## IMPORTANT SAFETY INSTRUCTIONS — Read Before Using!

### WARNING

- The socket-outlet shall be installed near the equipment and shall be easily accessible.
- To prevent electrical shock, do NOT use laminator close to water and do NOT spill water on laminator, electric cord, or wall socket.
- Do not leave electric cord in contact with a warm surface.
- Do not leave electric cord hanging from a cupboard or shelf.
- Do not use laminator if electric cord is damaged.
- Do not laminate metal objects.



### CAUTION

- Only use pouches specifically designed for the lamination setting (Hot or Cold) you intend to use.
- Always supervise children during laminator operation.
- Keep pets away from laminator while in use.
- Switch off and unplug laminator when not in use.
- Do not open or attempt to repair the laminator yourself, as this could result in electric shock and will void your warranty. Contact Customer Service if you have questions. Please note the warranty does not apply in cases of abuse, mishandling or unauthorized repair.
- Always wrap cord around feet while carrying or in storage.

## TIPS

- Always put item in a pouch. Never laminate an empty pouch.
- Trim excess pouch material from around your item after laminating and cooling.
- If using both hot and cold lamination in one session, use the cold setting first to avoid having to wait for the laminator to cool down.
- With self-adhesive pouches, use the laminator on the cold setting for a smoother finish.
- Before laminating valuable items, do a test run with an item similar in size and thickness.
- When not in use, wrap cord around feet for portable ease and optimal storage.
- When laminating heat-sensitive documents (i.e., tickets, ultrasounds, etc.) only use self-adhesive pouches on a cold setting.
- Use a dry-erase marker for writing on laminated pouches.

## REFILL SUPPLIES – 3 MIL POUCHES

### For Hot Lamination

Letter\*  
Photo  
ID Card (Unpunched)

Luggage Tag with Loop  
Business Card  
File Card

### For Cold Lamination

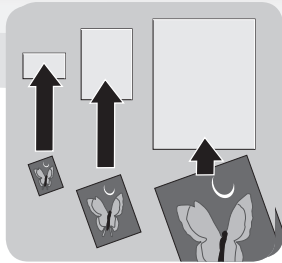
Self-Adhesive Letter

For best results, use Fellowes® brand pouches from your local retailer.

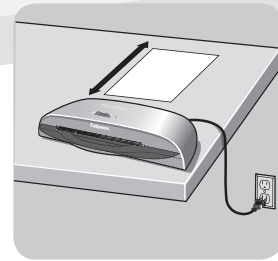
\*Includes combination cleaning / carrier sheet.

## BEFORE YOU LAMINATE

Use Fellowes® brand pouches for best results. Select correct pouch size for laminated item.



- Plug laminator into power outlet.
- Position laminator so you have enough space to allow items to pass freely through the machine.

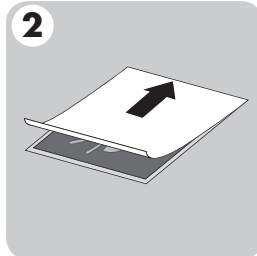


## ❄️ COLD LAMINATION STEPS

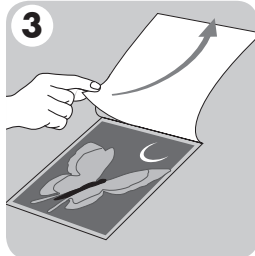
**CAUTION:** Only use self-adhesive pouches when laminating with a cold setting.



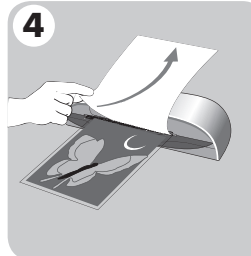
Slide power button to Cold Setting and wait for green Ready Light.



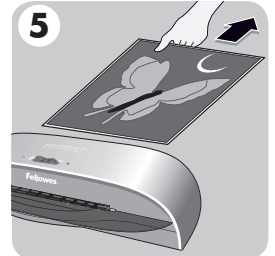
Center item on clear side against sealed edge; documents **cannot** be repositioned once laminated.



Peel a small part of the protective sheet away from document.



Place pouch, sealed edge first, into laminator entry. Keep pouch straight and use the edge guide to center it. Continue peeling the protective sheet away.

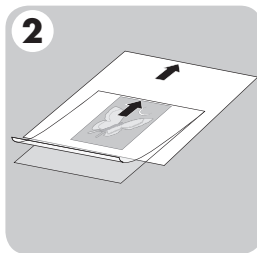


To prevent jamming, immediately remove laminated item from back of machine.

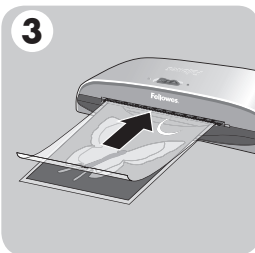
## ☹️ HOT LAMINATION STEPS



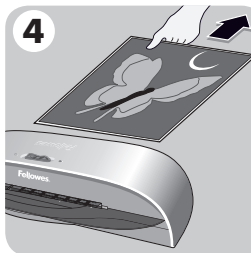
Slide power button to Hot Setting and wait for green Ready Light.



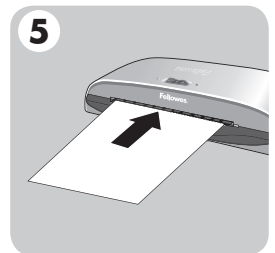
Place item inside pouch against the sealed edge. To prevent jamming, use a carrier when item is smaller than the pouch.



Place pouch, sealed edge first, into laminator entry. Keep pouch straight and use the edge guide to center it.



To prevent jamming, immediately remove laminated item from back of machine. Let item cool on flat surface for several seconds.



Before switching off laminator, feed empty cleaning/carrier sheet through machine to clean unit.

## TROUBLESHOOTING

Problem	Cause	Solution
Ready Light does not go on after extended time.	Laminator is in a hot, humid area.	Move laminator to a cool dry area.
Ready Light does not go on for cold lamination.	If you used the hot lamination setting before a cold lamination session, the laminator may need time to cool down.	Wait 90 minutes for laminator to fully cool down.
Pouch did not completely adhere to item.	Laminated item may be too thick.	Pass through laminator a second time.
Jamming	Laminated item was not immediately removed from machine or small items were laminated without a carrier. Pouch was not used. Pouch was not centered or straight when fed through Pouch/Document Entry.	Press release lever, in back of laminator, to gently pull pouch out of machine. Use cleaning sheet before laminating. Always put item in a pouch. Align sealed edge with Pouch/Document Entry. Use guide to center.

## Need Help?

**Customer Service:**  
 US: 1-800-945-4545  
 Canada: 1-800-665-4339  
 México: 1-800-234-1185  
[www.fellowes.com](http://www.fellowes.com)

Let our experts help you with a solution. Always call us first before contacting your place of purchase.

## WARRANTY

Fellowes warrants all parts of the laminator to be free of defects in material and workmanship for 2 years from the date of purchase by the original consumer. If any part is found to be defective during the warranty period, your sole and exclusive remedy will be repair or replacement, at Fellowes' option and expense, of the defective part. This warranty does not apply in cases of abuse, mishandling or unauthorized repair. ANY IMPLIED WARRANTY, INCLUDING THAT OF MERCHANTABILITY OR FITNESS FOR A PARTICULAR PURPOSE, IS HEREBY LIMITED IN DURATION

TO THE APPROPRIATE WARRANTY PERIOD SET FORTH ABOVE. IN NO EVENT SHALL FELLOWES BE LIABLE FOR ANY CONSEQUENTIAL OR INCIDENTAL DAMAGES ATTRIBUTABLE TO THIS PRODUCT. This warranty gives you specific legal rights. You may have other legal rights that vary from this warranty. The duration, terms and conditions of this warranty are valid world-wide, except where different limitations, restrictions or conditions may be required by local law. For more details or to obtain services under this warranty, please contact us or your dealer.



## Useful Phone Numbers

### Help Line

Australia	+ 1-800-33-11-77
Canada	+ 1-800-665-4339
Europe	00-800-1810-1810

México	+ 1-800-234-1185
United States	+ 1-800-955-0959

### Fellowes

Australia	+ 61-3-8336-9700
Benelux	+ 31-(0)-76-523-2090
Canada	+ 1-905-475-6320
Deutschland	+ 49-(0)-5131-49770
España	+ 34-91-748-05-01
France	+ 33-(0)-1-30-06-86-80
Italia	+ 39-071-730041

Japan	+ 81-(0)-3-5496-2401
Korea	+ 82-(0)-2-3462-2884
Malaysia	+ 60-(0)-35122-1231
Polska	+ 48-(22)-771-47-40
Singapore	+ 65-6221-3811
United Kingdom	+ 44-(0)-1302-836836
United States	+ 1-630-893-1600



1789 Norwood Avenue, Itasca, Illinois 60143-1095 • USA • 630-893-1600

[fellowes.com](http://fellowes.com)

Australia  
Benelux

Canada  
China

Deutschland  
España

France  
Italia

Japan  
Korea

Polska  
Singapore

United Kingdom  
United States