

Fellowes

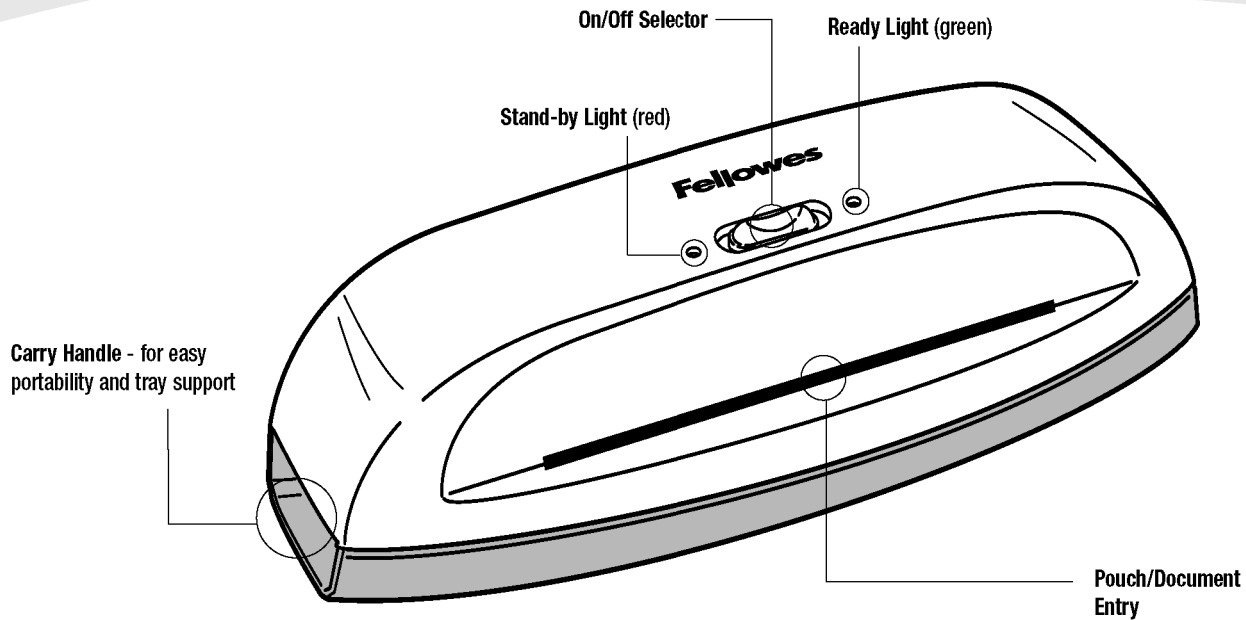


MARS™

ML 95/ML 125

Please read these instructions before use.
Veuillez lire ces instructions avant utilisation.
Lea estas instrucciones antes del uso.

ENGLISH



CAPABILITIES

	ML 95	ML 125
Pouch Thickness	3 mil	3 mil
Estimated Heat-Up Time	8 Minutes	8 Minutes
Approximate Cool-Down Time	90 Minutes	90 Minutes
Lamination Speed	11" (28 cm)/Minute	11" (28 cm)/Minute

	ML 95	ML 125
Maximum Width	9.5" (220 mm)	12.5" (330 mm)
Voltage	120V~	120V~
Frequency	60 Hz	60 Hz

IMPORTANT SAFETY INSTRUCTIONS — Read Before Using!

WARNING



- The socket-outlet shall be installed near the equipment and shall be easily accessible.
- To prevent electrical shock, do NOT use laminator close to water and do NOT spill water on laminator, electric cord, or wall socket.
- Do not leave electric cord in contact with a warm surface.
- Do not leave electric cord hanging from a cupboard or shelf.
- Do not use laminator if electric cord is damaged.
- Do not laminate metal objects.

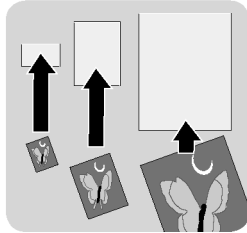
- Always supervise children during laminator operation.
- Keep pets away from laminator while in use.
- Switch off and unplug laminator when not in use.
- Do not open or attempt to repair the laminator yourself, as this could result in electric shock and will void your warranty. Contact Customer Service if you have questions. Please note the warranty does not apply in cases of abuse, mishandling or unauthorized repair.

TIPS

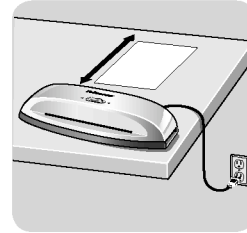
- Always put item in a pouch. Never laminate an empty pouch.
- Trim excess pouch material from around your item after laminating and cooling.
- Before laminating valuable items, do a test run with an item similar in size and thickness.
- Use a dry-erase marker for writing on laminated pouches.

BEFORE YOU LAMINATE

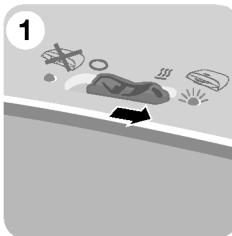
Use Fellowes® brand pouches for best results. Select correct pouch size for laminated item.



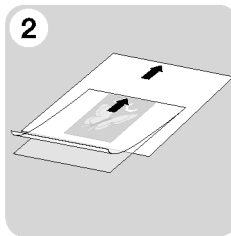
- Plug laminator into power outlet.
- Position laminator so you have enough space to pass freely through the machine.



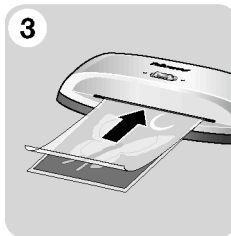
LAMINATION STEPS



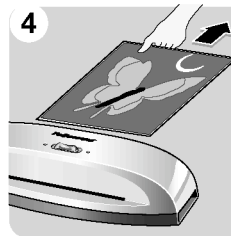
1 Slide power button to Setting and wait for green Ready Light.



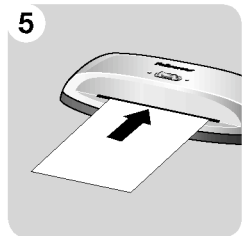
2 Place item inside pouch against the sealed edge. To prevent jamming, use a carrier when item is smaller than the pouch.



3 Place pouch, sealed edge first, into laminator entry. Keep pouch straight and use the edge guide to center it.



4 To prevent jamming, immediately remove laminated item from back of machine. Let item cool on flat surface for several seconds.



5 Before switching off laminator, feed empty cleaning & support sheet through machine to clean unit.

TROUBLESHOOTING

Problem	Cause	Solution
Ready Light does not go on after extended time.	Laminator is in a hot, humid area.	Move laminator to a cool dry area.
Pouch did not completely adhere to item.	Laminated item may be too thick.	Pass through laminator a second time.
Jamming	Pouch was not used. Pouch was not centered or straight when fed through Pouch/Document Entry.	Always put item in a pouch. Align sealed edge with Pouch/Document Entry. Use guide to center.

Need Help?

Customer Service:

US: 1-800-945-4545
Canada: 1-800-665-4339
México: 1-800-234-1185
www.fellowes.com

Let our experts help you with a solution. Always call us first before contacting your place of purchase.

WARRANTY

Fellowes warrants all parts of the laminator to be free of defects in material and workmanship for 2 year from the date of purchase by the original consumer. If any part is found to be defective during the warranty period, your sole and exclusive remedy will be repair or replacement, at Fellowes' option and expense, of the defective part. This warranty does not apply in cases of abuse, mishandling or unauthorized repair. ANY IMPLIED WARRANTY, INCLUDING THAT OF MERCHANTABILITY OR FITNESS FOR A PARTICULAR PURPOSE, IS HEREBY LIMITED IN DURATION

TO THE APPROPRIATE WARRANTY PERIOD SET FORTH ABOVE. IN NO EVENT SHALL FELLOWES BE LIABLE FOR ANY CONSEQUENTIAL OR INCIDENTAL DAMAGES ATTRIBUTABLE TO THIS PRODUCT. This warranty gives you specific legal rights. You may have other legal rights that vary from this warranty. The duration, terms and conditions of this warranty are valid world-wide, except where different limitations, restrictions or conditions may be required by local law. For more details or to obtain services under this warranty, please contact us or your dealer.

Help Line

Australia	+ 1-800-33-11-77
Canada	+ 1-800-665-4339
México	+ 1-800-234-1185
United States	+ 1-800-955-0959

Fellowes

Australia	+ 61-3-8336-9700
Benelux	+ 31-(0)-76-523-2090
Canada	+ 1-905-475-6320
Deutschland	+ 49-(0)-5131-49770
España	+ 34-91-748-05-01
France	+ 33-(0)-1-30-06-86-80
Italia	+ 39-071-730041
Japan	+ 81-(0)-3-5496-2401
Korea	+ 82-(0)-2-3462-2884
Malaysia	+ 60-(0)-35122-1231
Polska	+ 48-(22)-771-47-40
Singapore	+ 65-6221-3811
United Kingdom	+ 44-(0)-1302-836836
United States	+ 1-630-893-1600

www.fellowes.com



1789 Norwood Avenue, Itasca, Illinois 60143-1095 • USA • 630-893-1600

<http://www.fellowes.com>

Australia
Benelux

Canada
China

Deutschland
España

France
Italia

Japan
Korea

Polska
Singapore

United Kingdom
United States